

CLIBUS

Runway to carbon neutrality – Involvement of business communities in climate strategies

The Problem

Cities and regions across Europe have created climate strategies to achieve carbon-neutrality or remarkably reduce greenhouse gas (GHG) emissions by 2030.

After the easiest and most cost-efficient GHG emission reduction actions, it is essential to improve the involvement of business sector and SMEs in the implementation of local and regional climate strategies. However, public authorities are lacking capacity for the involvement of private sector and the issue is not yet well covered in the current policy instruments.

Deepening collaboration with business communities, such as industrial districts, business parks and networks would provide new opportunities to cities and regions in energy efficiency and GHG emission reduction.

It would also improve SMEs' preconditions to implement energy-efficiency and GHG reduction initiatives. Utilisation of ESG (Environmental, Social & Governance) reporting data from SMEs would also support targeting climate actions.

CLIBUS Overall Objective

The overall objective of the project CLIBUS is to improve current policy instruments to better support the preconditions of SMEs in business communities to implement energy efficiency and GHG reduction activities, including their premises, installations and processes. In the case of local strategies, the project aims to improve public authorities' capability to facilitate business sector's, especially SMEs', contribution in climate actions.

The project will focus on strengthening local public-private collaboration models between public authorities and business communities to reach SMEs, identifying approaches to support SMEs with energy-efficiency initiatives, and improving utilization of increasing ESG reporting information from private sector in targeting climate actions. In the case of financial instruments, CLIBUS aims to both directly and indirectly improve public authorities' capability to fund local energy-efficiency and GHG reduction investments of SMEs.

The Project

The CLIBUS partnership connects regions from four geographical areas of the programme, all sharing the common goal for an energy-efficient and sustainable future. The CLIBUS partnership is a balanced mix of new regions and previous experience of the programme from Finland, Denmark, Greece, the Netherlands and Ukraine.

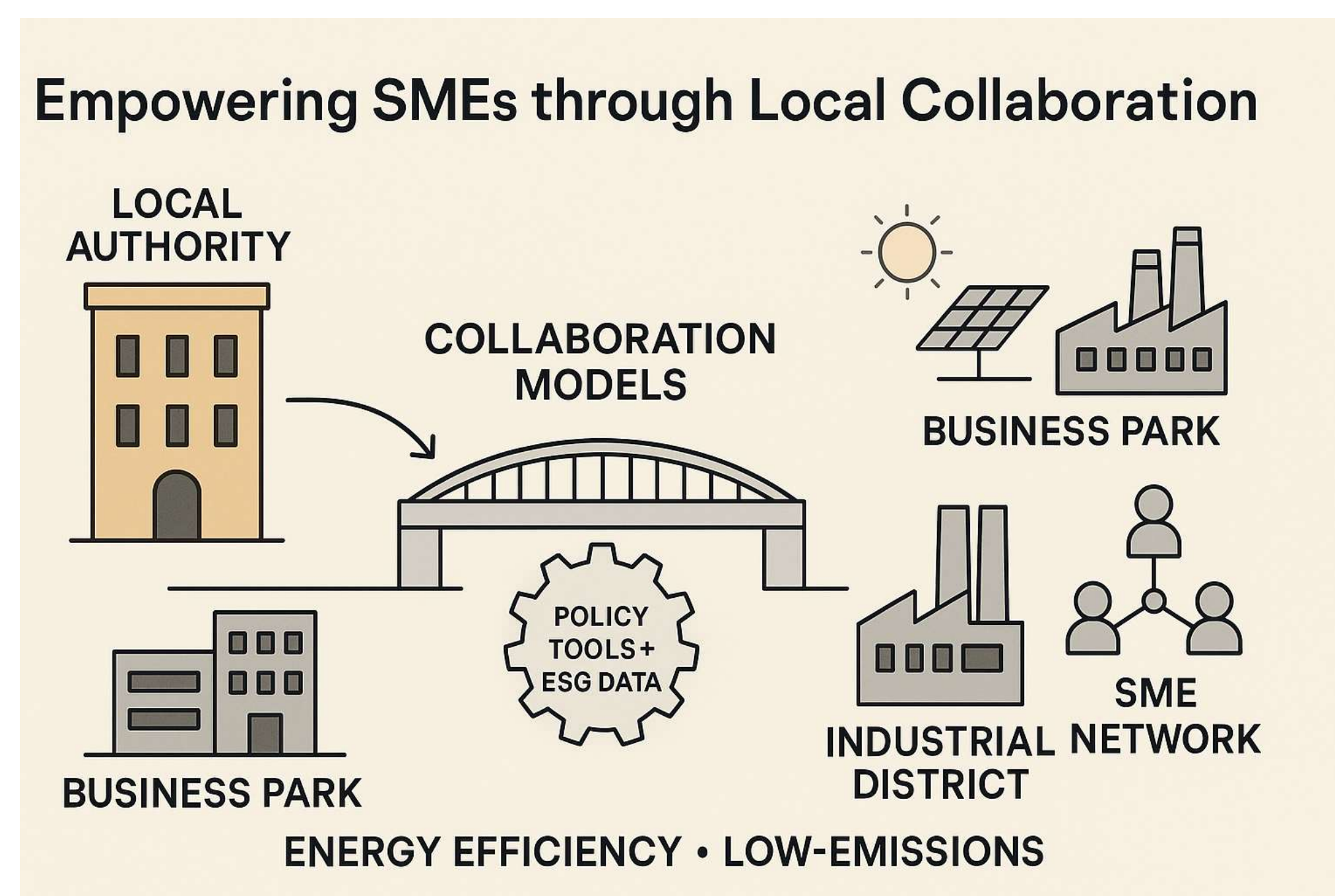


Figure 1. Public-private collaboration for climate action.

The Approach

CLIBUS is the first project in the IE programme on focusing public-private collaboration for promoting SMEs' energy-efficiency actions as part of local and regional climate strategies. CLIBUS provides innovative approaches for collaboration with business communities, such as business parks, industrial districts and networks, and improves the capacity of cities and regions as facilitators for SMEs in improving energy-efficiency. CLIBUS will also increase awareness of possibilities of ESG reporting.

The climate change is a common challenge and its mitigation a common responsibility. Many cities and regions across Europe already have many good examples to share with each other while others are looking for solutions to accelerate their climate actions. On the pathway towards carbon neutrality, regions can promote and inspire each other in their climate work by sharing the most innovative and sustainable solutions. It is reasonable to collaborate between regions, learn from others and by increased awareness and knowledge, develop local and regional policies. The project will also support the work towards carbon-neutral cities and regions according to EU Green Deal and UN Agenda 2030 on sustainable development goals. It also supports implementation of the EU Energy Policy.

Expected Impacts

CLIBUS will have a positive impact in terms of sustainable development.

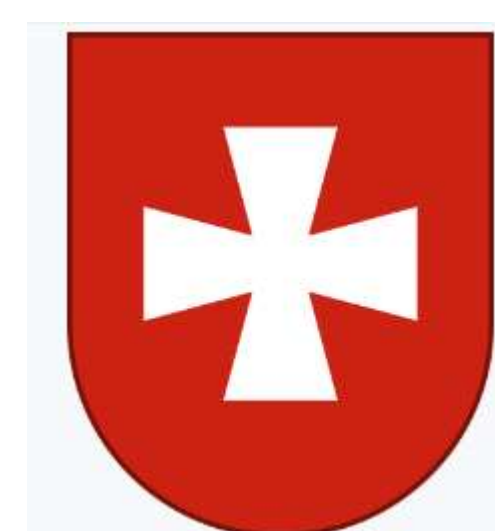
CLIBUS supports especially the following Sustainable Development Goals of UN Agenda2030:

- SDG7 in promoting improvement in energy-efficiency;
- SDG13 in improving the capacity of public authorities to engage private sector in climate change mitigation;
- SDG17 in sharing knowledge between regions, strengthening public-private collaboration and contributing together in the climate change mitigation.

The Project Partners



CERTH
CENTRE FOR
RESEARCH & TECHNOLOGY
HELLAS



Contact:

Dr. Georgios Banias

Research Director

g.banias@certh.gr | +30 2311 257650



CERTH
CENTRE FOR
RESEARCH & TECHNOLOGY
HELLAS



iBO | CERTH
6th km CharilaouThermi Rd.
57001 | Thermi | Thessaloniki | Greece
www.ibo.certh.gr | www.certh.gr