



CareWaste

Minimization of landfilled waste residues within the framework of the European directives, the principles of bio-economy, the circular economy and the national planning

The Problem

Based on the Waste Framework Directive 2008/98/EC, linear economy models should be turned into circular ones, hence maximizing material and energy recovery from waste and minimize the need for disposal of residues to landfills. In line with this, in Greece, according to the National Waste Management Plan (Law 4042/2012), 50% of the aggregate municipal waste was supposed to be prepared for re-use and recycling through separate collection of recyclables and bio-waste by 2020. However, it is doubtful that the requirements, the objectives and the timeframe of both the European directives and the National Waste Management Plans can be achieved.



CareWaste Overall Objective

The basic aim of the CareWaste project is twofold:

- The minimization of the future residues disposal to landfills within the principles of a circular based economy and;
- The establishment of adequate tools for the enhancing of controls/inspections and enforcement mechanisms in order to ensure compliance with the legislative framework.



Project Partners

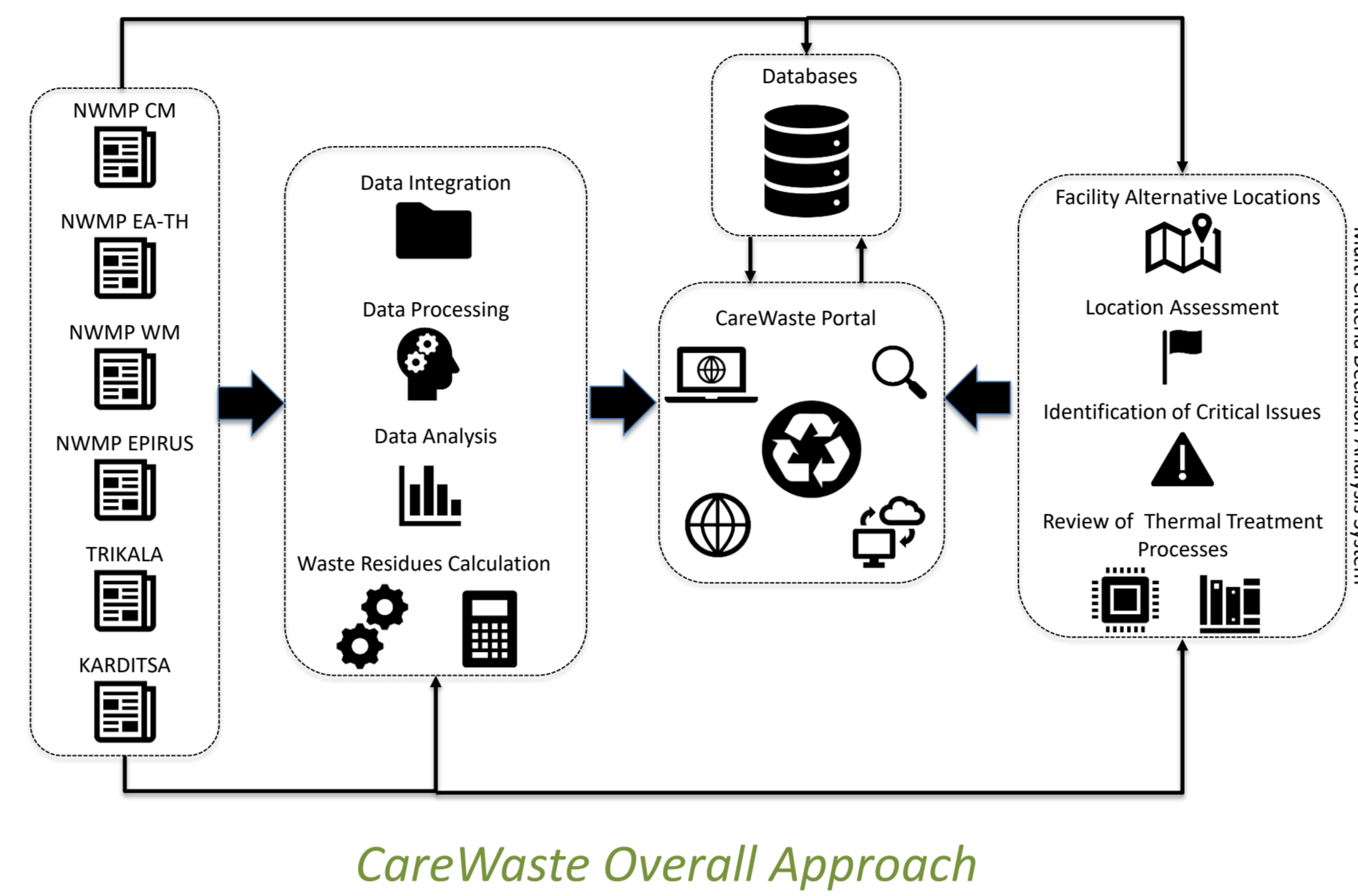


EKETA
ΕΘΝΙΚΟ ΚΕΝΤΡΟ
ΕΡΕΥΝΑΣ & ΤΕΧΝΟΛΟΓΙΚΗΣ
ΑΝΑΤΤΗΧΗΣ



The Project

CareWaste's vision is to develop an information system for monitoring and promoting circular economy strategies to reduce the amount of municipal solid waste being disposed on landfills.



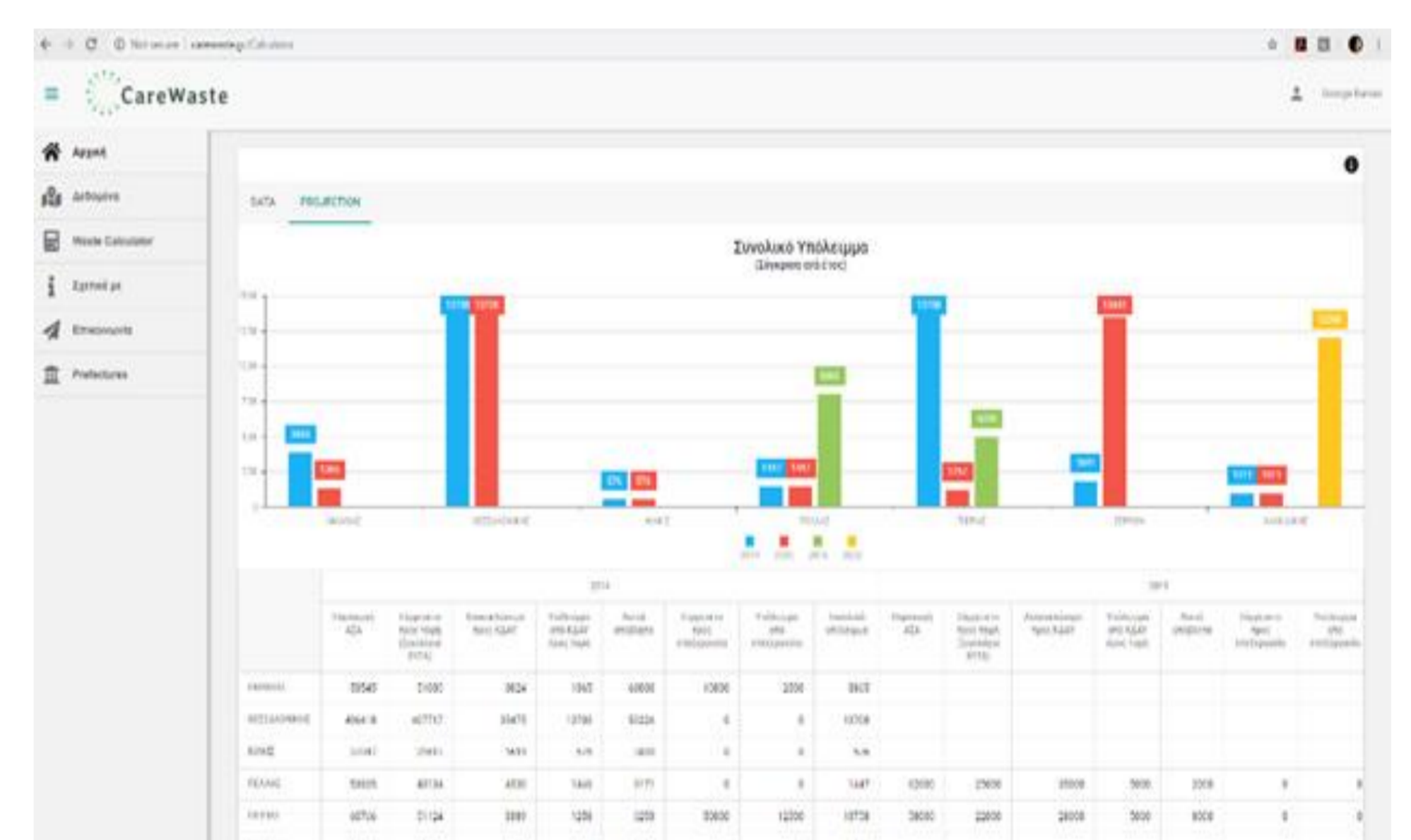
CareWaste Overall Approach

The Platform

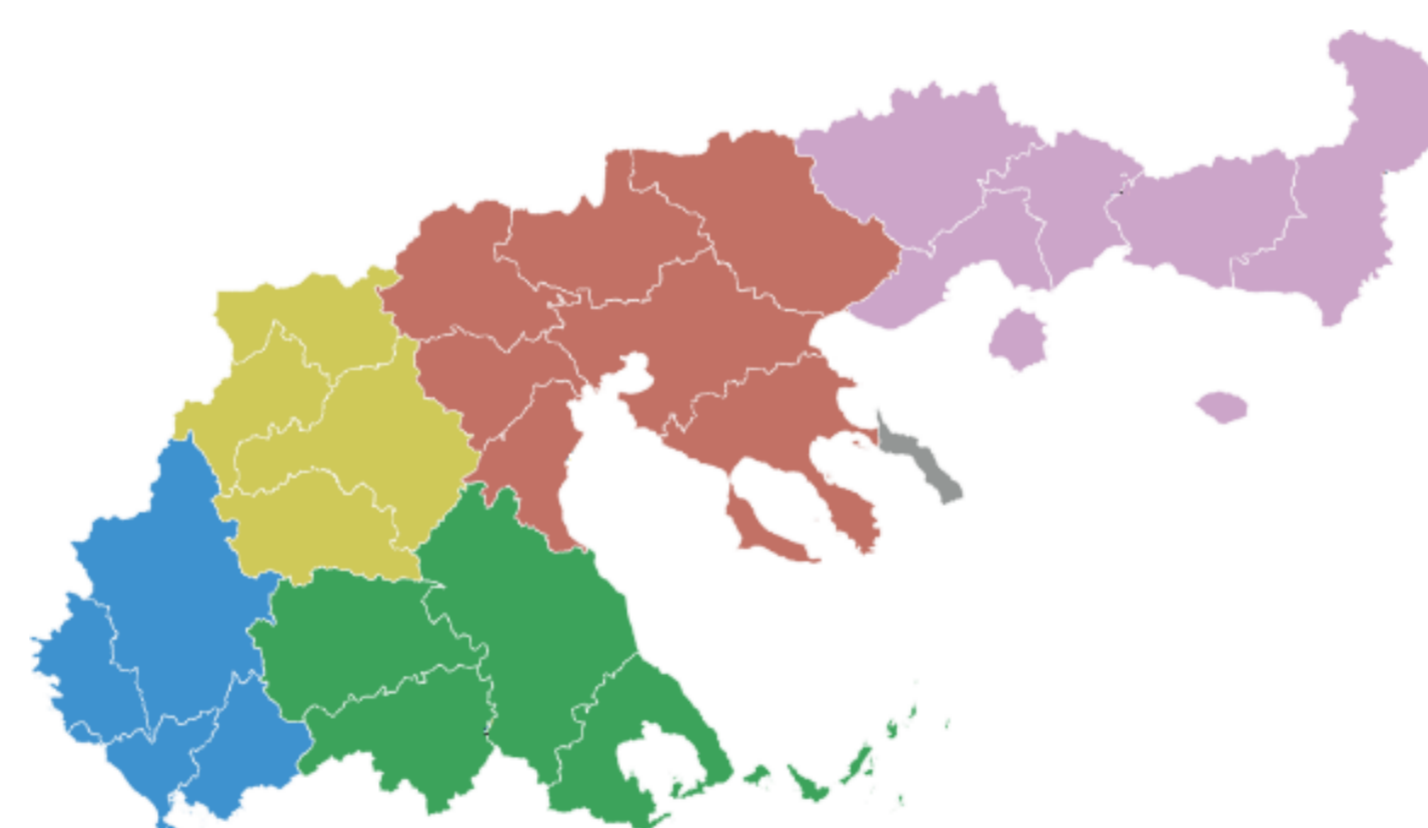
The entire process will be facilitated by the development of the CareWaste platform with a view to ensuring the effective and efficient implementation of alternative scenarios' analysis as well as the continuous monitoring and collection of the data required to demonstrate the potential of the proposed waste management practices.



The CareWaste Platform



Case study results



Expected Impacts

- Promote the principles of Circular Economy, maximize societal consensus and move towards a zero-waste economy;
- Reduce the amount of municipal solid waste being disposed on landfills;
- Minimize environmental impact associated with waste disposal;
- Decrease the demand for the location of new landfill sites;
- Lead to financial benefits as regards municipal solid waste management practices.

The Pilot Cases

In order for CareWaste to pilot test the alternative waste management scenarios, six regions of Greece with diverse characteristics have been selected: East Macedonia and Thrace, Central Macedonia, West Macedonia, Epirus and Thessaly (Municipality of Trikala, Municipality of Karditsa).

Contact:

Dr. Georgios Banias
Researcher

g.banias@certh.gr | +30 2311 257650



CERTH
CENTRE FOR
RESEARCH & TECHNOLOGY
HELLAS



Institute for Bio-economy & Agri-technology

iBO | CERTH

6th km CharilaouThermi Rd.

57001 | Thermi | Thessaloniki | Greece

www.ibo.certh.gr | www.certh.gr